

(1) 1100 Blk-E-Lincoln. Map will be provided. Atlas Pg 004.
 Starting at MH 004 open cut, going west, and replace 520ft of 8" sewer main with 8" sch40 with up to 16 service connections. New 48" MH will be set at the 330ft mark.

002

014



001

015

006

005

016

TETRA TECH

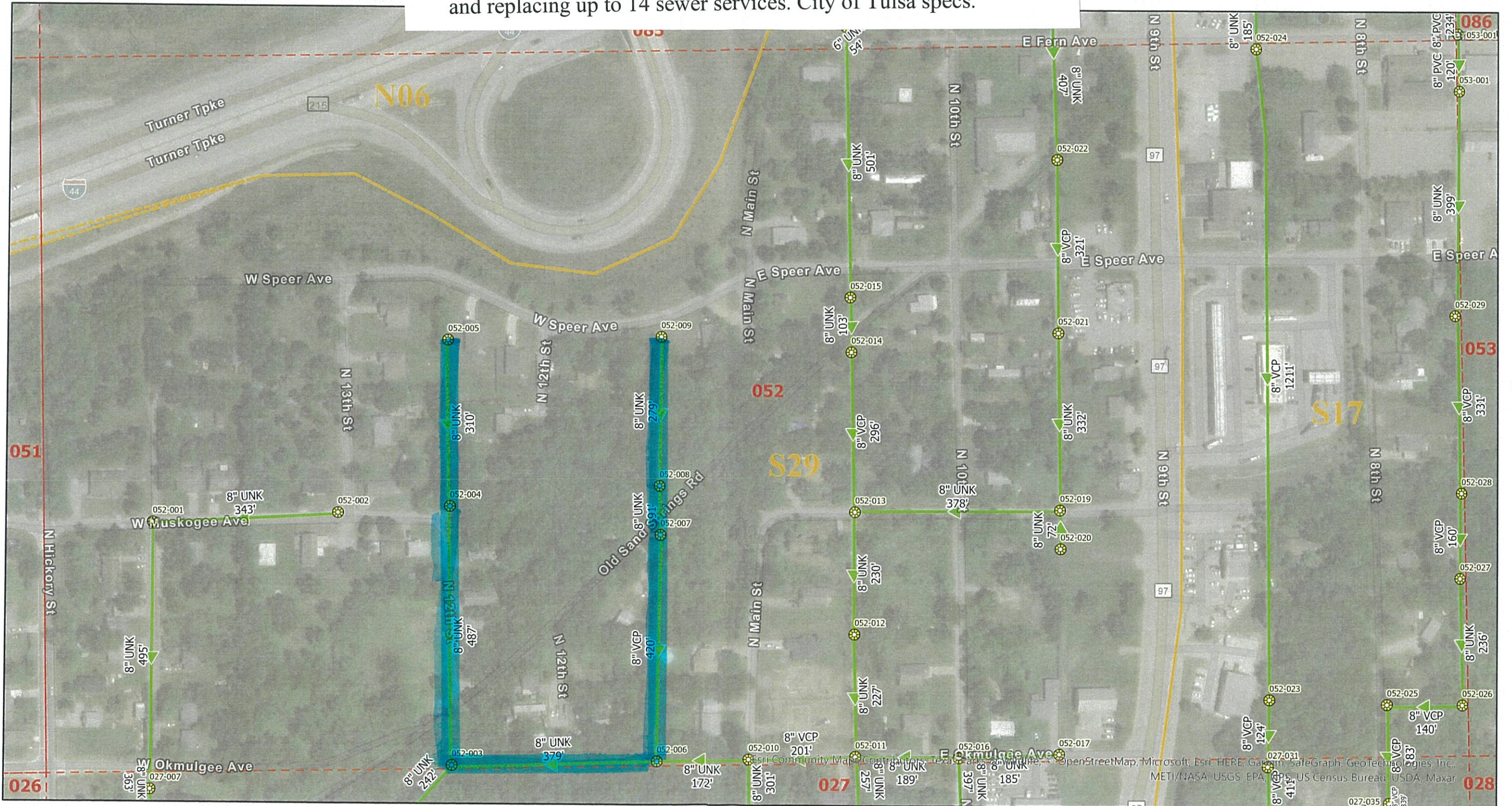
- ▲ Lamphole
- ▶ 2022 ForceMain
- Manhole
- ▭ AtlasGrid
- Lift Station
- ▭ Basin Boundaries
- ➔ 2022 Gravity Sewer



City of Sapulpa
 Sewer System Atlas
 Updated: January 2022

004

(2) (Area of Muskogee & 13th) & (Speer & Old Sand Springs Rd). Map will be provided. Slipline up to 2,000ft of 8" sewer main and replacing up to 14 sewer services. City of Tulsa specs.



- Lamphole
- Manhole
- Lift Station
- 2022 Gravity Sewer
- 2022 ForceMain
- AtlasGrid
- Basin Boundaries



City of Sapulpa
Sewer System Atlas
Updated: January 2022

052

027

029

(3) 100 Blk-N-Birch. Map will be provided. Open cut and replace 340ft of 8" sewer pipe with 8" sch40 with up to 16 sewer service connections.



010

012

009

003

002



- Lamphole
- 2022 ForceMain
- Manhole
- AtlasGrid
- Lift Station
- Basin Boundaries
- 2022 Gravity Sewer



City of Sapulpa
Sewer System Atlas
Updated: January 2022

011